

Service Parts List

Z 30 S

CONTENTS

Introduction	iii
Ordering Instruction	iii
General Notes	iii
Recommendation List	iv
Preconisation List "M"	v
Preconisation List "C"	vi
Preconisation List "S"	vi
1. Frame	1.2
2. Refrigeration Circuit	3.4
3. Harness	5.6
4. Power Box 380/400/3/50 Hz and 60 Hz	7.8
5. Power Box 220/230/1/50 Hz	9.10
6. Power Box 208/230/1/60 Hz	11.12
7. Power Box 115/1/60 Hz	13.14
8. Cubic Evaporator	15.16
9. Front Evaporator	17.18



Carrier

A United Technologies Company

Carrier Transicold E.T.O. - B.P. 16 - 76520 Franqueville-Saint-Pierre - FRANCE
Carrier Transicold Division, Carrier Corporation, P.O. Box 4805, Syracuse, N.Y. 13221

© Carrier Corporation 1998 - Imprimé en France 06-98

Z 30 S

MODEL CHARTS

MODEL CHARTS FOR UNIT

Refrigerant	Voltage	Model	Without hot gas valve	With hot gas-valve	Compressor
R 134 a	12 Volts	Road	8000721	8000808	--
		Road / Standby 115/1/60 Hz	8000987	8000988	TM 16
		Road / Standby 208/230/1/60 Hz	8000945	8000946	
		Road / Standby 230/1/50 Hz	8000723	8000805	
		Road / Standby 230/400/3/50 Hz	8000722	8000804	
		Road / Standby 230/400/3/60 Hz	8000944	8000947	
	24 Volts	Road	8000921	8001247	--
		Road / Standby 208/230/1/60 Hz	8001185	--	TM 16
		Road / Standby 230/1/50 Hz	8000920	--	
		Road / Standby 230/400/3/50 Hz	8000922	8001055	
		Road / Standby 230/400/3/60 Hz	8001184	8001247	
R 404 a	12 Volts	Road	8000903	8001046	--
		Road / Standby 12 Volts 230/1/50 Hz	8000901	8001045	TM 16
		Road / Standby 12 Volts 230/400/3/50 Hz	8000900	8001044	

MODEL CHARTS FOR CUBIC EVAPORATOR

Refrigerant	Voltage	Model	Without Injection Liquid	With Injection Liquid
R 134 A	12 Volts	Cubic Evaporator	8000724	8000806
	24 Volts	Cubic Evaporator	8000923	8000919
R 404 A	12 Volts	Cubic Evaporator	--	8000898
	24 Volts	Cubic Evaporator	--	8001113

MODEL CHARTS FOR CEILING EVAPORATOR

Refrigerant	Voltage	Model	Without Injection Liquid	With Injection Liquid
R 134 A	12 Volts	Ceiling Evaporator	8000809	8000810
R 134 A	24 Volts	Ceiling Evaporator	8001187	8001186

Z 30 S

INTRODUCTION

This parts lists identifies service replacement parts for the CARRIER TRANSICOLD Z 30 S refrigeration units. This unit is designed for medium temperature cooling, heating and defrost for truck application.

Detailed parts identification for these items may be found in the applicable parts lists.

ORDERING INSTRUCTION

All orders and inquiries for parts must include:

- Unit Serial Number
- Description of part as shown on list
- Part No.
- Quantity required

Address all correspondence for parts to the following address according to your living area.

You live in:	EUROPE (East/West) AFRICA - MIDDLE EAST	E.T.O.	AMERICA (North/Middle/South) N.A.O.
Address your orders to:	CARRIER TRANSICOLD E.T.O. 10-12 Boulevard de l'Oise 95000 CERGY-PONTOISE Phone : (33).1.34.43.48.00 Fax : (33).1.34.43.48.48		CARRIER TRANSICOLD Division Replacement Components Group TR-20 P.O. Box 4805, Syracuse, NY 13221 or Fax to : (315) 432.3778

GENERAL NOTES

To find replacement parts, determine major group in which replacement part is located, consult table of contents for the appropriate page for the illustrated breakdown of the replacement part.

The following letter designations are used to classify parts throughout this list.

A/R	As Required.	NSS	<i>Not Sold Separately - order next higher assembly or kit.</i>
NLO	<i>No Longer Offered.</i>	PL	<i>Purchase Locally.</i>
NS	<i>Not Shown in the illustration.</i>	SST	<i>Stainless Steel - 300 Series unless otherwise specified.</i>
NSA	Non-Stock Assembly - order components listed under the assembly	SV - SK	<i>Suffix SV - SK added to part number</i>
NSI	<i>Non-Stock - may be available on special order</i>		

Z 30 S

RECOMMENDATION LIST

To help you manage your stocks, a recommendation list is provided on the following page(s).

Item are classified into three categories.

M for maintenance

e.g. Filter, Belt, Electric motor brushes, Drier, Fuse, etc...

C for Critical

i.e. items without which the unit cannot restart.

S for Selection

Same level of necessity as C, but whose probability of requirement depends on the characteristics of the vehicle fleet, i.e. age of units and level of service provided to user (e.g. 24 hour a day service).

In the event of repair, only use original CARRIER PERFORMANCE PARTS.



Z 30 S

PART NO.	DESCRIPTION	QTY	LOCATION
PRECONISATION LIST "M"			
04-60008-24	Rear Bearing	1	2
04-60008-29	Front Bearing	1	2
50-60198-03	V-Belt 50 Hz R134A	1	2
50-60198-02	V-Belt 50 Hz R404A and 60 Hz	1	2
54-60006-30	Brush	6	2.16.18
54-60006-31	Plug	6	2.16.18
14-60018-04	Filter Drier	1	4
14-01092-06	Sight Glass	1	4
22-02336-00	Fuse 30 A	5	6.8.10.12.14
22-02336-16	Fuse 40 A	1	6
22-60102-08	Fuse 4 A	4	8.10.12.14
22-02336-06	Fuse 15 A	3	8.10.12
22-02336-02	Fuse 5 A	4	8.10.12.14
22-02336-03	Fuse 3 A	3	8.10.12

Z 30 S

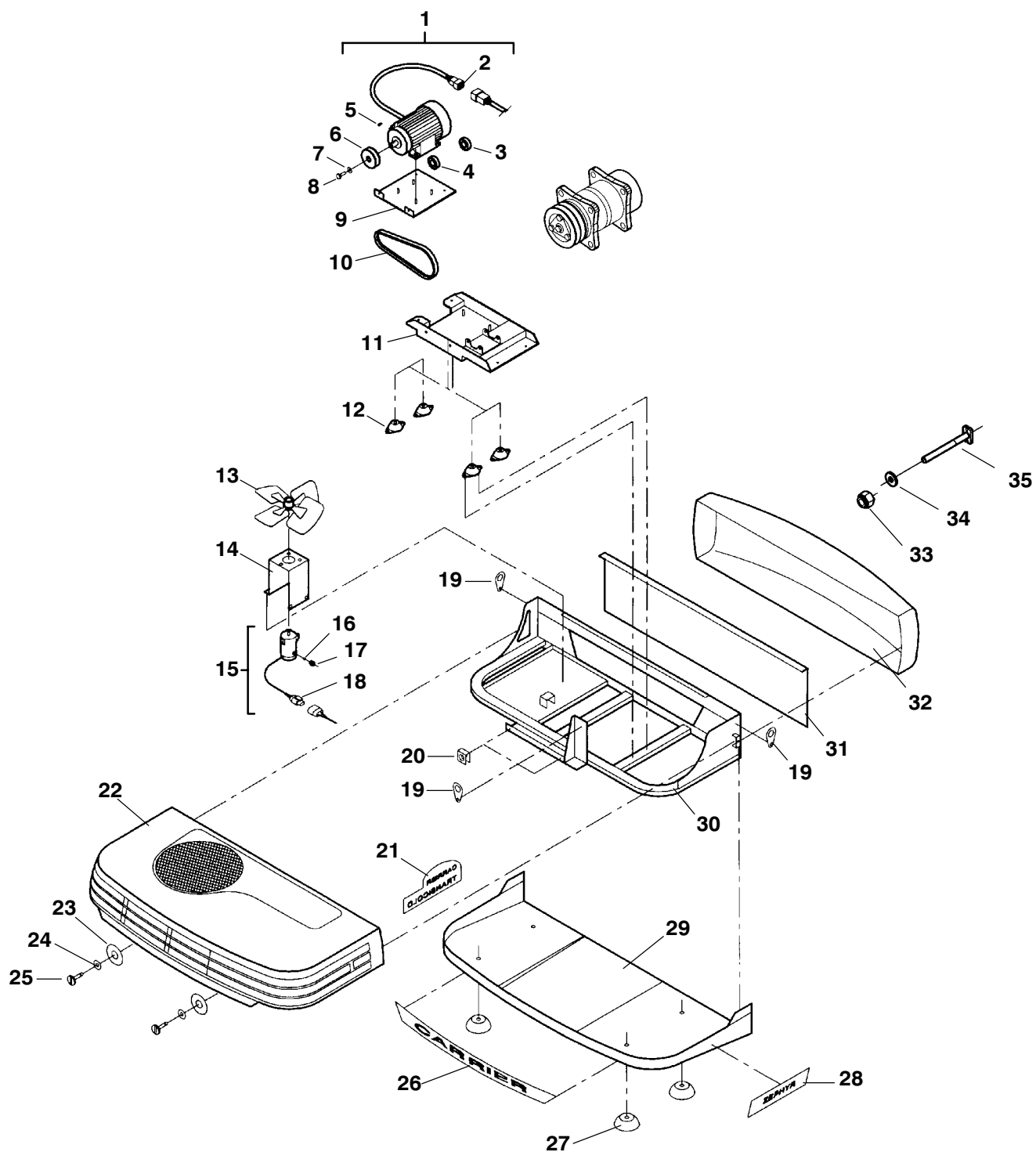
PART NO.	DESCRIPTION	QTY	LOCATION
PRECONISATION LIST "C"			
54-60006-07	Fan Motor 12 Volts	1	2
54-60006-06	Fan Motor 24 Volts	3	2,16,18
7104560	Coil 24 Volts	1	4
12-60032-00	H.P. Switch R134A	1	4
12-60032-01	H.P. Switch R134A	1	4
12-60032-02	H.P. Switch R404A	1	4
12-60032-03	H.P. Switch R404A	1	4
14-60026-01	Check Valve	1	4
22-60268-00	Coil 12 Volts R404A	1	4
22-60268-01	Coil 24 Volts R134A	1	4
22-60307-00	Coil 12 Volts	2	4
10-00286-04	Relay	2	6
10-60035-00	Regulator	2	6
12-60029-06	Power Module	1	6
10-60044-00	Overload Relay	3	8,10,12
10-60040-01	Capacitor	4	8,10,12,14
10-60045-00	Diode Bridge	4	8,10,12,14
12-60049-00	Diode	4	8,10,12,14
22-60184-00	Resistor	4	8,10,12,14
22-60298-00	Transformer Fuse	3	8,10,14
10-60048-05	Starting Capacitor	1	10
10-60047-00	Permanent Capacitor	2	10,12
10-60012-00	Starting Relay	3	10,12,14
10-60048-03	Starting Capacitor	1	12
10-60047-05	Permanent Capacitor	2	14
10-60048-06	Starting Capacitor	2	14
12-60019-01	Diruptor	1	14
7104525	Injection Switch	2	16,18
12-60015-01	L.P Switch	2	16,18
14-01110-01	Coil 12 Volts	2	16,18
14-01110-03	Coil 24 Volts	2	16,18
14-60009-02	Expansion Valve Orifice	2	16,18
14-60055-00	Switch Defrost Termination	2	16,18
54-60006-10	Fan Motor 12 Volts	2	16,18

Z 30 S

PART NO.	DESCRIPTION	QTY	LOCATION
PRECONISATION LIST "S"			
54-60028-02	Electric Motor 230/400/3/50 and 230/400/3/60	1	2
54-60028-05	Electric Motor 230/1/50	1	2
54-60028-07	Electric Motor 208/230/1/60	1	2
54-60028-09	Electric Motor 115/1/60	1	2
14-60062-00	Valve R404A and 24 Volts R134A	1	4
14-60063-00	Hot Gas Valve	1	4
14-60063-00	Valve R134A	1	4
18-00072-20	Compressor 12 Volts R404A	1	4
18-00072-21	Compressor 24 Volts R134A	1	4
18-00072-30	Compressor 12 Volts R134A	1	4
50-60135-00	Electromagnetic Clutch	2	4
50-60136-00	Electromagnetic Clutch	1	4
76-60624-00	Repair Kit	2	4
81-60096-00	Valve Discharge	1	4
12-60028-00	Command Cab	1	6
22-60168-00	Command Cab Cable	1	6
10-00383-02	Transformer 24 Volts	1	8
10-00383-04	Transformer 12 Volts	1	8
12-60044-00	Contacteur 24 Volts	3	8,10,12
10-60043-00	Auxiliary Contactor	4	8,10,12,14
12-60044-01	Contacteur 12 Volts	4	8,10,12,14
14-60014-00	Pressure Regulating Valve R404A	1	16
14-60039-00	Expansion Valve R404A	1	16
40-60135-00	Oriflce R404A	1	16
14-60050-01	Expansion Valve R134A	2	16,18
14-60051-00	Injection Valve and Coil 12 Volts	2	16,18
14-60051-02	Injection Valve 24 Volts	2	16,18
22-60167-00	Sensor	2	16,18

Z 30 S

1. FRAME

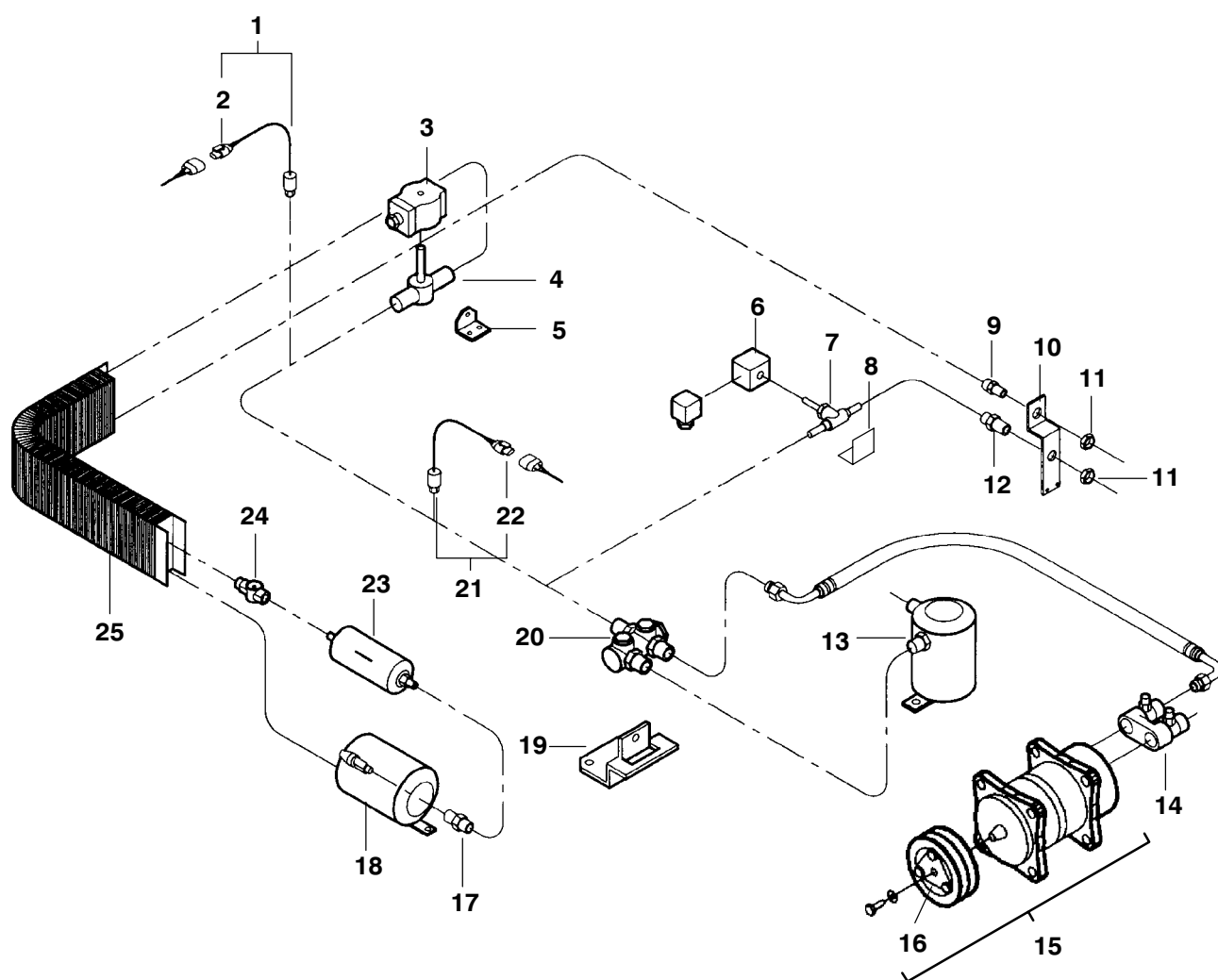


Z 30 S

ITEM	PART NO.	DESCRIPTION	QTY
1. FRAME			
1	54-60028-09	Electric Motor 115/1/60 -- Includes :	1
1	54-60028-07	Electric Motor 208/230/1/60 -- Includes :	1
1	54-60028-05	Electric Motor 230/1/50 -- Includes :	1
1	54-60028-02	Electric Motor 230/400/3/50 and 230/400/3/60 -- Includes :	1
2	22-60228-00SV	Connector (Mates with 22-60227-00SV)	1
3	04-60008-24	Rear Bearing	1
4	04-60008-29	Front Bearing	1
5	34-60060-00	Key 8x7x12 2 br	1
6	50-60077-00	Pulley 50 Hz R134A	1
6	50-60107-00	Pulley 50 Hz R404A and 60 Hz	1
7	48-60145-54	Washer	1
8	PL	Screw HM 8 X 20	1
9	68-60269-00	Bracket	1
10	50-60198-03	V-Belt 50 Hz R134A	1
10	50-60198-02	V-Belt 50 Hz R404A and 60 Hz	1
11	86-60208-00	Power Tray	1
12	73-60022-00	Schockmount	4
13	38-60017-00	Fan	1
14	68-60361-00	Bracket	1
15	54-60006-07	Fan Motor 12 Volts -- Includes :	1
15	54-60006-06	Fan Motor 24 Volts -- Includes :	1
16	54-60006-30	Brush	2
17	54-60006-31	Plug	2
18	22-50078-02SV	Connector (Mates with 22-50078-01SV)	1
19	68-60272-00	Bracket	3
20	44-01145-16	Nut	4
21	62-60219-00	Decal	1
22	58-60225-00	Cover BLACK	1
22	58-60225-01	Cover WHITE	1
23	48-60065-00	Spacer	4
24	44-01145-10	Plastic Washer	4
25	44-01145-02	Latch	4
26	901015	Decal	1
27	810127	Sucker (Option)	4
28	62-60271-00	Decal	1
29	58-60192-00	Cover	1
30	86-60247-00	Frame	1
31	68-60279-00	Plate (Option)	1
32	58-60197-00	Rear cover (Option)	1
33	34-01184-64	Lock nut M14	4
34	34-01249-24	Washer	4
35	03037001	T-Bolt	4

Z 30 S

2. REFRIGERATION CIRCUIT

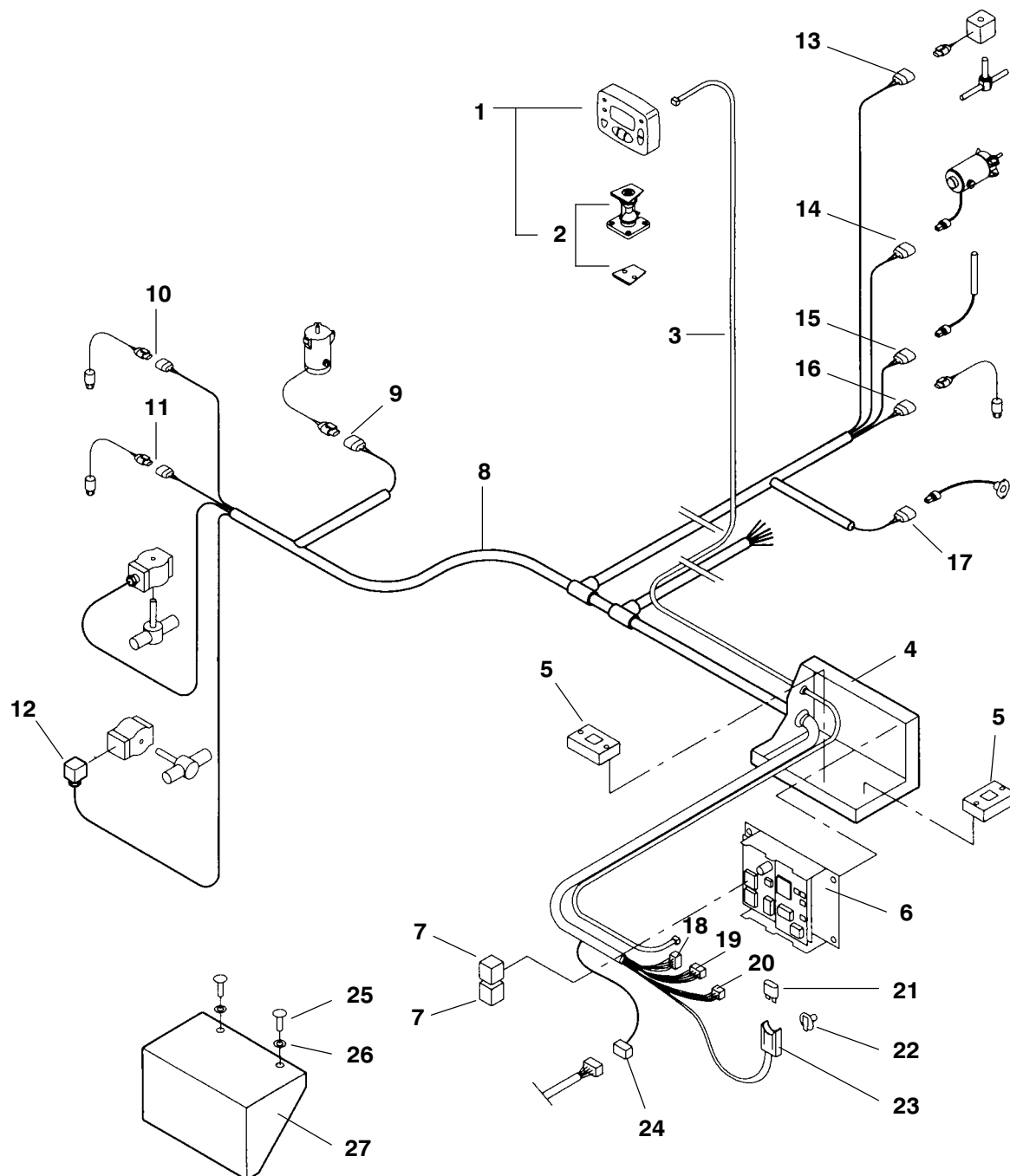


Z 30 S

ITEM	PART NO.	DESCRIPTION	QTY
2. REFRIGERATION CIRCUIT			
1	12-60032-00	H.P. Switch R134A – Includes :	1
2	22-50078-01SV	Connector (Mates with 22-50078-02SV)	1
1	12-60032-02	H.P. Switch R404A – Includes :	1
2	22-50078-01SV	Connector (Mates with 22-50078-02SV)	1
3	22-60307-00	Coil 12 Volts	1
3	7104560	Coil 24 Volts	1
4	14-60063-00	Hot Gas Valve	1
5	68-60348-00	Bracket	1
6	22-60307-00	Coil 12 Volts R134A	1
6	22-60268-00	Coil 12 Volts R404A	1
6	22-60268-01	Coil 24 Volts R134A	1
7	14-60063-00	Valve R134A	1
7	14-60062-00	Valve R404A and 24 Volts R134A	1
8	68-60344-00	Bracket	1
9	40-60007-13	Fitting	1
10	68-60278-00	Bracket	1
11	40-60102-00	Nut	2
12	40-60007-12	Fitting	1
13	14-60048-00	Oil Separator	1
14	40-60093-00	Coupling Flange	1
15	18-00072-30	Compressor 12 Volts R134A -- Includes :	1
16	50-60135-00	Electromagnetic Clutch	1
15	18-00072-20	Compressor 12 Volts R404A -- Includes :	1
16	50-60135-00	Electromagnetic Clutch	1
15	18-00072-21	Compressor 24 Volts R134A -- Includes :	1
16	50-60136-00	Electromagnetic Clutch	1
17	14-60026-01	Check Valve	1
18	65-60029-00	Receiver	1
19	68-60349-00	Bracket	1
20	81-60096-00	Valve Discharge -- Includes :	1
NS	76-60624-00	Repair Kit	2
21	12-60032-01	H.P. Switch R134A – Includes :	1
22	22-50078-02SV	Connector (Mates with 22-50078-01SV)	1
21	12-60032-03	H.P. Switch R404A – Includes :	1
22	22-50078-02SV	Connector (Mates with 22-50078-01SV)	1
23	14-60018-04	Filter Drier	1
24	14-01092-06	Sight Glass	1
25	08-60059-00	Condenser	1

Z 30 S

3. HARNESS

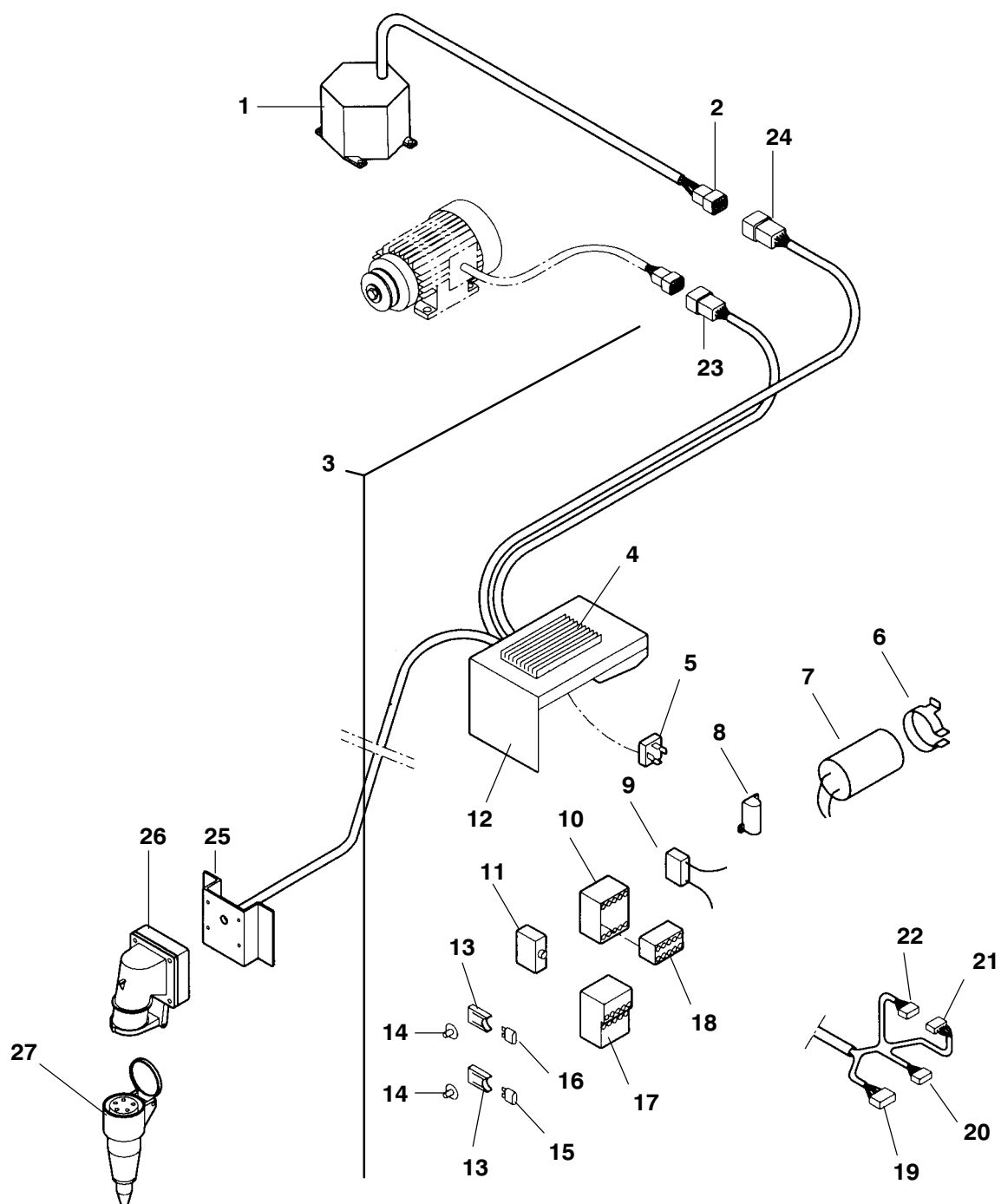


Z 30 S

ITEM	PART NO.	DESCRIPTION	QTY
3. HARNESS			
1	12-60028-00	Command Cab -- Includes :	1
2	22-60166-00	Bracket	1
3	22-60168-00	Command Cab Cable	1
4	86-60318-00	Box	1
5	10-60035-00	Regulator	2
6	12-60029-06	Power Module	1
7	10-00286-04	Relay	2
8	22-60173-00	Harness -- Includes :	1
9	22-50078-01SV	Connector (Mates with 22-50078-02SV)	1
10	22-50078-02SV	Connector (Mates with 22-50078-01SV)	1
11	22-50078-01SV	Connector (Mates with 22-50078-02SV)	1
12	22-60068-00	Connection coil	1
13	22-50078-01SV	Connector (Mates with 22-50078-02SV)	1
14	22-50078-01SV	Connector (Mates with 22-50078-02SV)	1
15	22-50078-02SV	Connector (Mates with 22-50078-01SV)	1
16	22-50078-02SV	Connector (Mates with 22-50078-01SV)	1
17	22-50078-02SV	Connector (Mates with 22-50078-01SV)	1
18	22-60300-10SV	Connector	1
19	22-60275-17SV	Connector	1
20	22-60300-06SV	Connector	1
21	22-02336-00	Fuse 30 A	1
22	22-60197-00	Socket Fuse Bracket	1
23	22-60195-00	Socket Fuse	1
24	22-60254-15SV	Connector (Mates with 22-60254-14SV)	1
25	44-01145-03	Latch	2
26	44-01145-13	Plastic Washer	2
27	86-60358-00	Cover Road Box	1
NS	22-02336-16	Fuse 40 A	1
NS	22-50078-61	Socket Fuse	1
NS	22-50078-61A	Cover Fuse	1

Z 30 S

4. POWER BOX 380/400/3/50 HZ AND 60 HZ

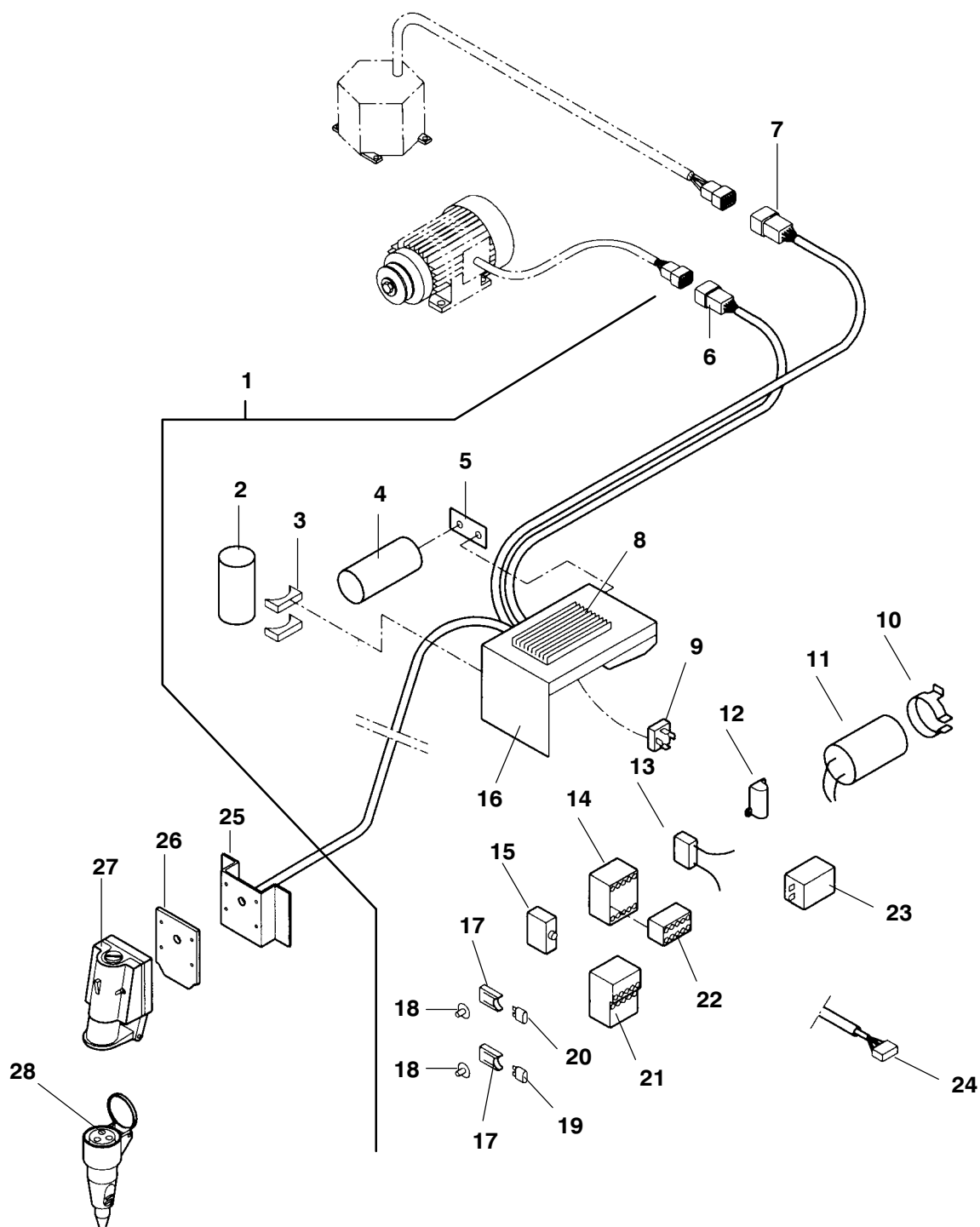


Z 30 S

ITEM	PART NO.	DESCRIPTION	QTY
4. POWER BOX 380/400/3/50 HZ AND 60 HZ			
1	10-00383-04	Transformer 12 Volts -- Includes :	1
1	10-00383-02	Transformer 24 Volts -- Includes :	1
2	22-60229-00SV	Connector (Mates with 22-60210-00SV)	1
3	91-60114-10 – NSA	Control Box 12 Volts – Includes :	1
3	91-60114-11 – NSA	Control Box 24 Volts – Includes :	1
4	22-60301-00	Heat Sink	1
5	10-60045-00	Diode Bridge	1
6	10-60046-01	Clamp	1
7	10-60040-01	Capacitor	1
8	22-60184-00	Resistor	1
9	12-60049-00	Diode	1
10	12-60044-01	Contactor 12 Volts	1
10	12-60044-00	Contactor 24 Volts	1
11	22-60298-00	Transformer Fuse	1
NS	22-60102-08	Fuse 4 A	1
12	86-60317-00	Box	1
13	22-60195-00	Fuse Holder	2
14	22-60197-00	Fuse Holder Pin	2
15	22-02336-00	Fuse 30 A 12 Volts	1
15	22-02336-06	Fuse 15 A 24 Volts	1
16	22-02336-02	Fuse 5 A 12 Volts	1
16	22-02336-03	Fuse 3 A 24 Volts	1
17	10-60044-00	Overload Relay	1
18	10-60043-00	Auxiliary Contactor	1
19	22-60254-15SV	Connector 8 Ways (Mates with 22-60254-14SV)	1
20	22-60300-07SV	Connector 220 V (Mates with 22-60300-06SV)	1
21	22-60300-07SV	Connector 380 V (Mates with 22-60300-06SV)	1
22	22-60300-06SV	Connector (Mates with 22-60300-07SV)	1
23	22-60227-00SV	Connector (Mates with 22-60228-00SV)	1
24	22-60210-00SV	Connector (Mates with 22-60229-00SV)	1
25	7101235	Bracket	1
26	22-60389-03	Receptacle	1
27	22-60388-02	Plug	1

Z 30 S

5. POWER BOX 220/230/1/50 HZ



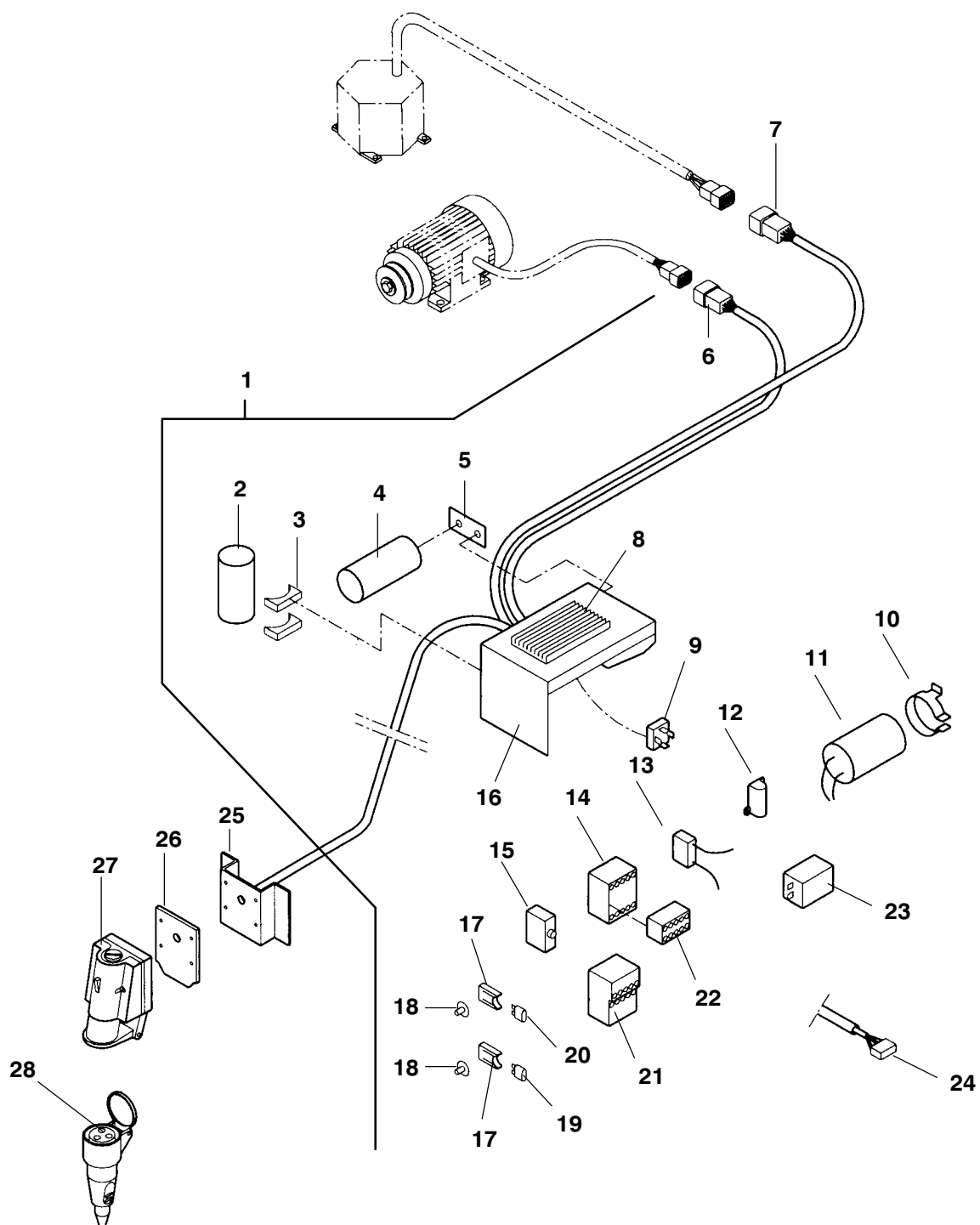
Z 30 S

ITEM	PART NO.	DESCRIPTION	QTY
5. POWER BOX 220/230/1/50 HZ			
1	91-60114-20 – NSA	Control Box 12 Volts – Includes :	1
1	91-60114-21 – NSA	Control Box 24 Volts – Includes :	1
2	10-60048-05	Starting Capacitor	1
3	22-60224-00	Bracket	2
4	10-60047-00	Permanent Capacitor	1
5	68-60452-00	Capacitor Bracket	1
6	22-60227-00SV	Connector (Mates with 22-60228-00SV)	1
7	22-60210-00SV	Connector (Mates with 22-60229-00SV)	1
8	22-60301-00	Heat Sink Starting With Serial Number P704190 *	1
9	10-60045-00	Diode Bridge	1
10	10-60046-01	Clamp	1
11	10-60040-01	Capacitor	1
12	22-60184-00	Resistor	1
13	12-60049-00	Diode	1
14	12-60044-01	Contactor 12 Volts	1
14	12-60044-00	Contactor 24 Volts	1
15	22-60298-00	Transformer Fuse	1
NS	22-60102-08	Fuse 4 A	1
16	86-60317-00	Box	1
17	22-60195-00	Fuse Holder	2
18	22-60197-00	Fuse Holder Pin	2
19	22-02336-00	Fuse 30 A 12 Volts	1
19	22-02336-06	Fuse 15 A 24 Volts	1
20	22-02336-02	Fuse 5 A 12 Volts	1
20	22-02336-03	Fuse 3 A 24 Volts	1
21	10-60044-00	Overload Relay	1
22	10-60043-00	Auxiliary Contactor	1
23	10-60012-00	Starting Relay	1
24	22-60254-15SV	Connector 8 Ways (Mates with 22-60254-14SV)	1
25	021772	Bracket	1
26	167240	Gasket	1
27	22-60403-01	Receptacle	1
28	22-60404-01	Plug	1

* Prior To Serial Number See Service Bulletin : 97-17

Z 30 S

6. POWER BOX 208/230/1/60 HZ



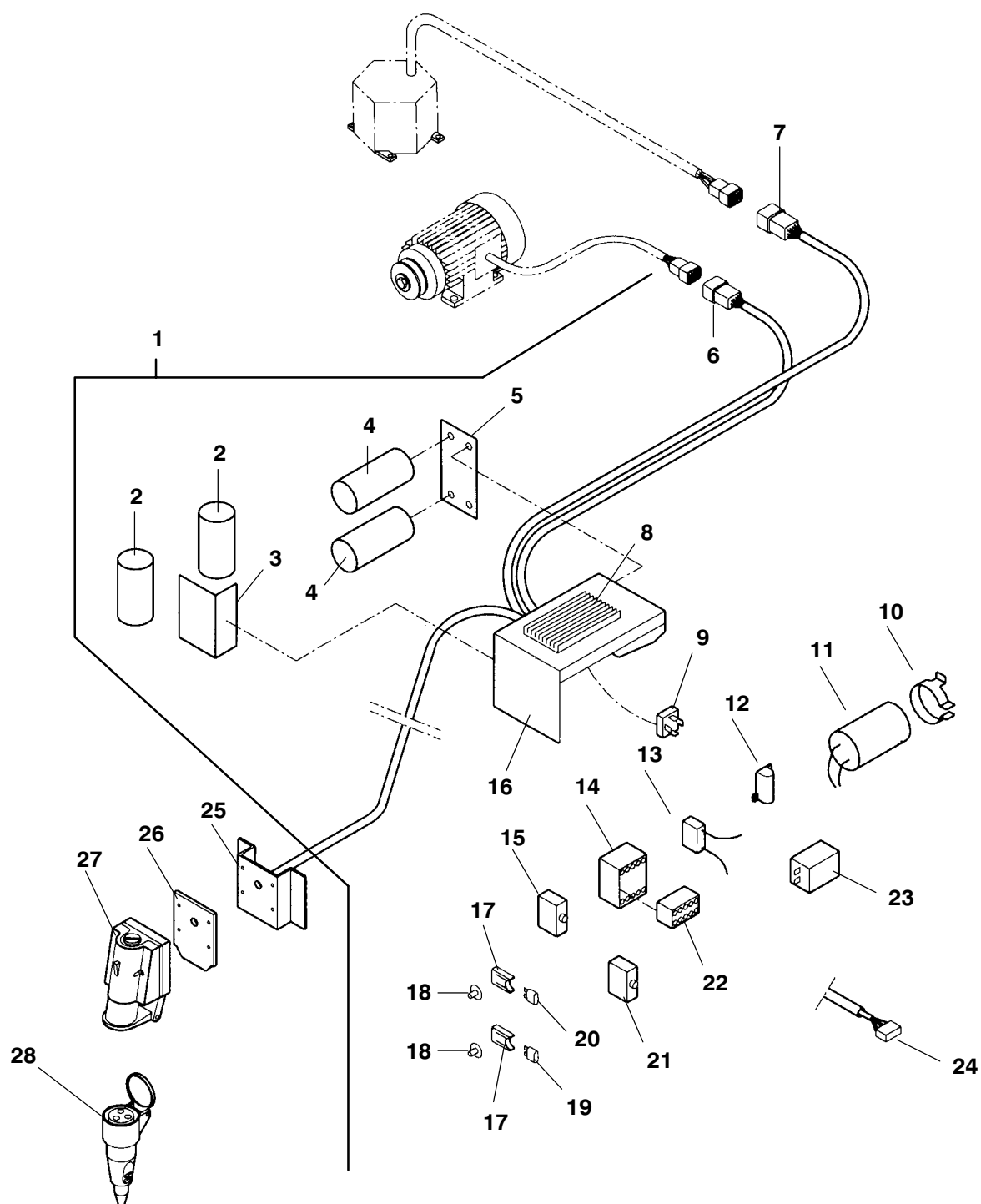
Z 30 S

ITEM	PART NO.	DESCRIPTION	QTY
6. POWER BOX 208/230/1/60 HZ			
1	91-60114-32 – NSA	Control Box 12 Volts – Includes :	1
1	91-60114-33 – NSA	Control Box 24 Volts – Includes :	1
2	10-60048-03	Starting Capacitor	1
3	22-60224-00	Bracket	2
4	10-60047-00	Permanent Capacitor	1
5	68-60452-00	Capacitor Bracket	1
6	22-60227-00SV	Connector (Mates with 22-60228-00SV)	1
7	22-60210-00SV	Connector (Mates with 22-60229-00SV)	1
8	22-60301-00	Heat Sink Starting With Serial Number P704190 *	1
9	10-60045-00	Diode Bridge	1
10	10-60046-01	Clamp	1
11	10-60040-01	Capacitor	1
12	22-60184-00	Resistor	1
13	12-60049-00	Diode	1
14	12-60044-01	Contactor 12 Volts	1
14	12-60044-00	Contactor 24 Volts	1
15	22-60298-00	Transformer Fuse	1
NS	22-60102-08	Fuse 4 A	1
16	86-60317-00	Box	1
17	22-60195-00	Fuse Holder	2
18	22-60197-00	Fuse Holder Pin	2
19	22-02336-00	Fuse 30 A 12 Volts	1
19	22-02336-06	Fuse 15 A 24 Volts	1
20	22-02336-02	Fuse 5 A 12 Volts	1
20	22-02336-03	Fuse 3 A 24 Volts	1
21	10-60044-00	Overload Relay	1
22	10-60043-00	Auxiliary Contactor	1
23	10-60012-00	Starting Relay	1
24	22-60254-15SV	Connector 8 Ways (Mates with 22-60254-14SV)	1
25	021772	Bracket	1
26	167240	Gasket	1
27	22-60403-01	Receptacle	1
28	22-60404-01	Plug	1

* Prior To Serial Number See Service Bulletin : 97-17

Z 30 S

7. POWER BOX 115/1/60 HZ



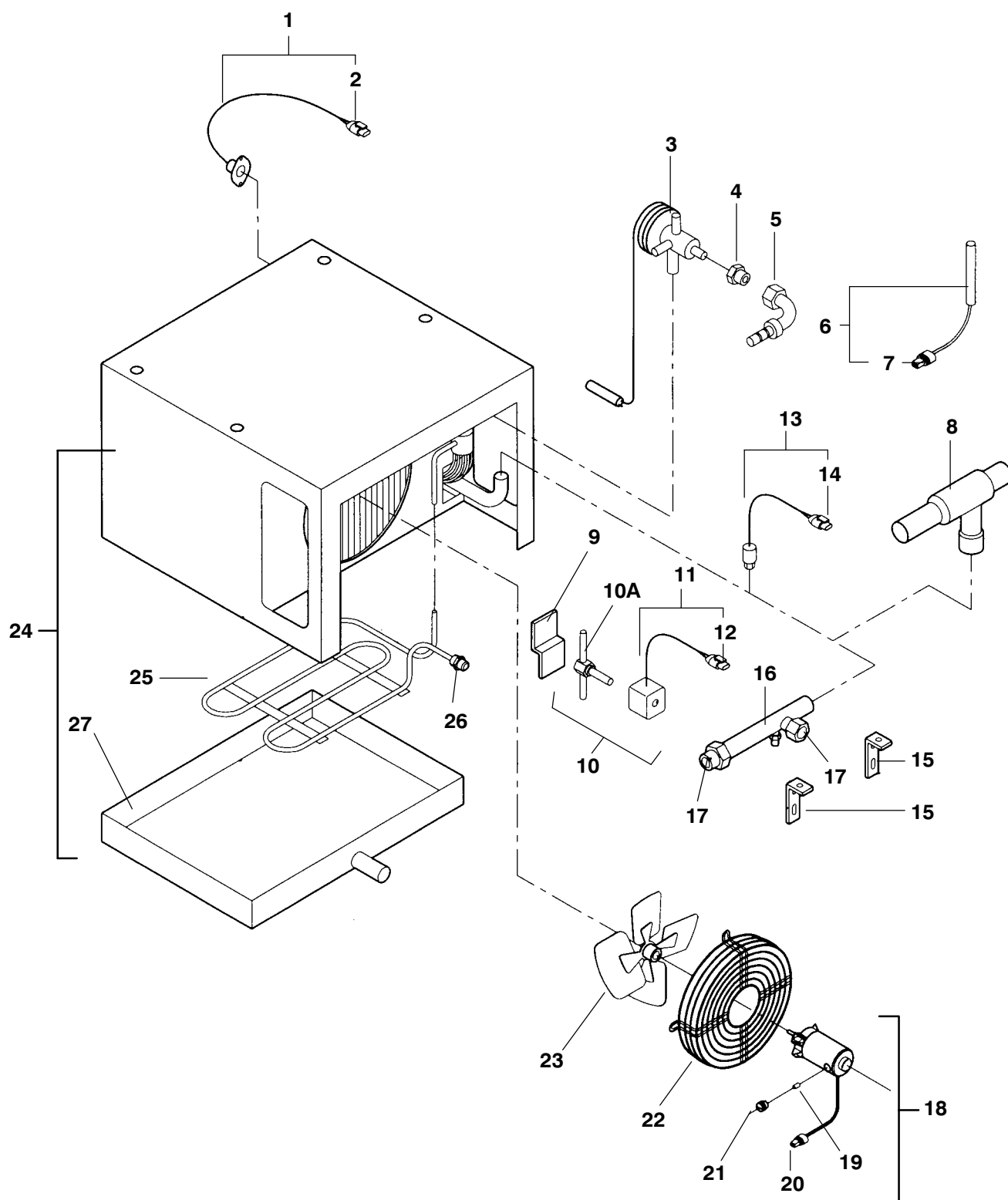
Z 30 S

ITEM	PART NO.	DESCRIPTION	QTY
7. POWER BOX 115/1/60 HZ			
1	91-60114-40 – NSA	Control Box 12 Volts – Includes :	1
2	10-60048-06	Starting Capacitor	2
3	68-60454-00	Bracket	1
4	10-60047-05	Permanent Capacitor	2
5	68-60453-00	Bracket	1
6	22-60227-00SV	Connector (Mates with 22-60228-00SV)	1
7	22-60210-00SV	Connector (Mates with 22-60229-00SV)	1
8	22-60301-00	Heat Sink Starting With Serial Number P704190 *	1
9	10-60045-00	Diode Bridge	1
10	10-60046-01	Clamp	1
11	10-60040-01	Capacitor	1
12	22-60184-00	Resistor	1
13	12-60049-00	Diode	1
14	12-60044-01	Contactor	1
15	22-60298-00	Transformer Fuse	1
NS	22-60102-08	Fuse 4 A	1
16	86-60317-00	Box	1
17	22-60195-00	Fuse Holder	2
18	22-60197-00	Fuse Holder Pin	2
19	22-02336-00	Fuse 30 A	1
20	22-02336-02	Fuse 5 A	1
21	12-60019-01	Diruptor	1
22	10-60043-00	Auxiliary Contactor	1
23	10-60012-00	Starting Relay	1
24	22-60254-15SV	Connector 8 Ways (Mates with 22-60254-14SV)	1
25	021772	Bracket	1
26	167240	Gasket	1
27	22-60403-01	Receptacle	1
28	22-60404-01	Plug	1

* Prior To Serial Number See Service Bulletin : 97-17

Z 30 S

8. CUBIC EVAPORATOR

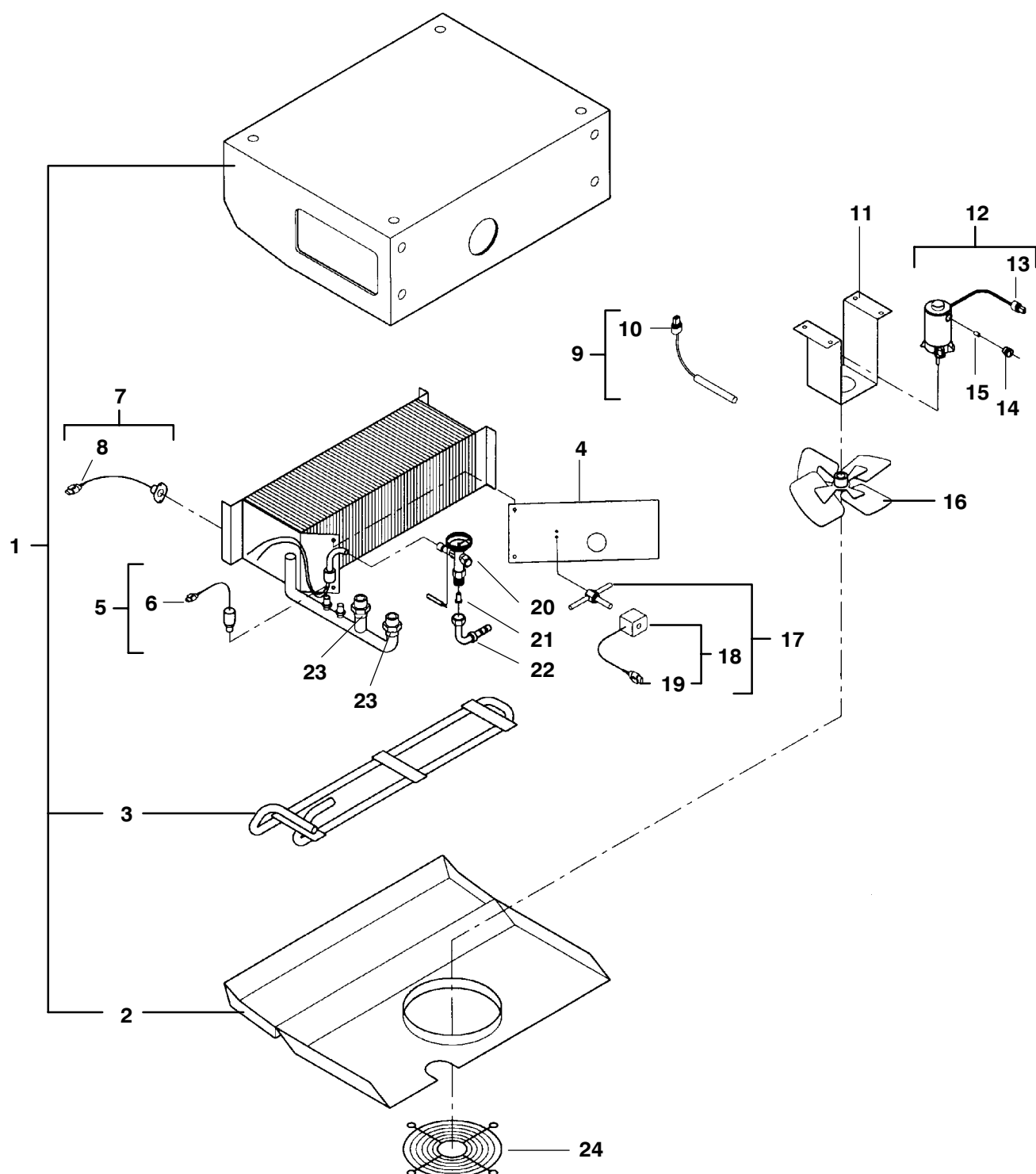


Z 30 S

ITEM	PART NO.	DESCRIPTION	QTY
8. CUBIC EVAPORATOR			
1	14-60055-00	Switch Defrost Termination – Includes :	1
2	22-50078-01SV	Connector (Mates with 22-50078-02SV)	1
3	14-60050-01	Expansion Valve R134A	1
3	14-60039-00	Expansion Valve R404A	1
NS	14-60009-02	Expansion Valve Orifice	1
4	40-60037-00	Fitting	1
5	40-60103-00	Adaptor	1
6	22-60167-00	Sensor -- Includes :	1
7	22-50078-01SV	Connector (Mates with 22-50078-02SV)	1
8	14-60014-00	Pressure Regulating Valve R404A	1
9	7104535	Bracket	1
10	14-60051-00	Injection Valve and Coil 12 Volts -- Includes :	1
11	14-01110-01	Coil 12 Volts – Includes :	1
12	22-50078-02SV	Connector (Mates with 22-50078-01SV)	1
10A	14-60051-02	Injection Valve 24 Volts	1
NS	40-60135-00	Orifice R404A	1
11	14-01110-03	Coil 24 Volts	1
12	22-50078-02SV	Connector (Mates with 22-50078-01SV)	1
NS	51900821	Screw H UNC 5/32 X 32 FP – 1/2	2
13	12-60015-01	L.P Switch – Includes :	1
14	22-50078-01SV	Connector (Mates with 22-50078-02SV)	1
15	68-60283-00	Bracket	2
16	40-60141-00	Special Fitting R134A	1
17	40-60010-04	Female Fitting	2
NS	42-60011-03	O-ring	1
18	54-60006-10	Fan Motor 12 Volts – Includes :	1
18	54-60006-06	Fan Motor 24 Volts – Includes :	1
19	54-60006-30	Brush	2
20	54-60006-31	Plug	2
21	22-50078-02SV	Connector (Mates with 22-50078-01SV)	1
22	73-60031-00	Bracket	1
23	38-60009-00	Fan	1
24	79-60234-00	Evaporator – Includes :	1
25	81-60091-00	Defrost Element – Includes :	1
26	40-60007-02	Fitting	1
27	86-60081-00	Pan	1
NS	34-01262-00	Fixing Mushroom	4
NS	7104525	Injection Switch	1
NS	68-60065-00	Injection Switch Bracket	1

Z 30 S

9. FRONT EVAPORATOR



Z 30 S

ITEM	PART NO.	DESCRIPTION	QTY
9. FRONT EVAPORATOR			
1	79-60078-00	Evaporator Assy – Includes :	1
2	56-60492-00	Defrost Element	1
3	86-60415-00	Pan	1
4	68-60318-00-NSI	Deflector	1
5	12-60015-01	L.P. Switch– Includes :	1
6	22-50078-01SV	Connector (Mates with 22-50078-02SV)	1
7	14-60055-00	Switch Defrost termination – Includes :	1
8	22-50078-01SV	Connector (Mates with 22-50078-02SV)	1
9	22-60167-00	Sensor -- Includes :	1
10	22-50078-01SV	Connector (Mates with 22-50078-02SV)	1
11	68-60331-00	Bracket	1
12	54-60006-10	Motor Fan 12 Volts – Includes :	1
12	54-60006-06	Motor Fan 24 Volts – Includes :	1
13	22-50078-02SV	Connector (Mates with 22-50078-01SV)	1
14	54-60006-30	Brush	2
15	54-60006-31	Plug	2
16	38-60018-00	Fan	1
17	14-60051-00	Injection Valve and Coil 12 Volts -- Includes :	1
18	14-01110-01	Coil 12 Volts – Includes :	1
19	22-50078-02SV	Connector (Mates with 22-50078-01SV)	1
17	14-60051-02	Injection Valve 24 Volts	1
18	14-01110-03	Coil 24 Volts	1
NS	51900821	Screw H UNC 5/32 X 32 FP – 1/2	2
20	14-60050-01	Expansion Valve	1
21	14-60009-02	Expansion Valve Orifice	1
22	40-60103-00	Special Fitting	1
23	40-60007-04	Fitting	2
24	73-60026-00	Protector Fan	1
NS	34-01262-00	Fixing Mushroom	4
NS	7104525	Injection Switch	1
NS	68-60065-00	Injection Switch Bracket	1